



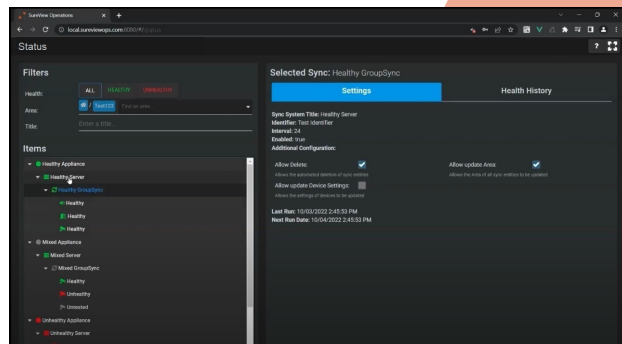
sureview



# SureView Status

## A SINGLE VIEW INTO THE STATUS OF ALL YOUR SYSTEMS AND DEVICES

Introducing SureView Status, a single interface for monitoring the status and health of the systems your security teams rely on. By leveraging SureView's vast integration library, Status is able to provide a holistic view of all your operations, regardless of your systems and devices you have deployed. It's the latest module to be delivered via SureView Operations' SaaS suite.

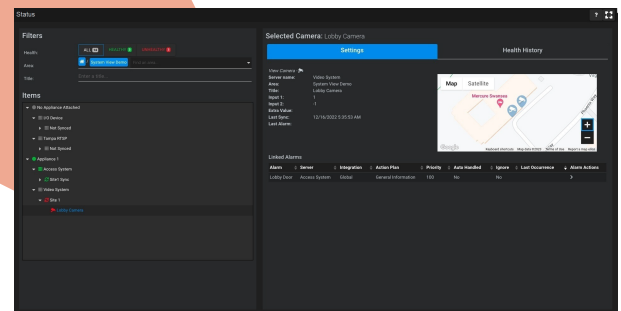


## THE CHALLENGE

Many of the systems security operations teams rely on for quick and consistent response are supported by different teams or third-party integrators. These systems are typically deployed across a wide range of locations and networks. Each system must be maintained and readily available for operators in the security command center. Monitoring the status of these various siloed systems is challenging, and means security response teams need simple ways to identify a problem by location or subsystem—anything that may impact their response to an event.

## THE SOLUTION

SureView Status is designed to provide security operations teams insight into the current status and general health of the devices and systems within their organization. Whether the team is monitoring access control, streaming video, connecting to alarm receivers, monitoring IoT devices, receiving business risk alerts or monitoring anything with an IP address, SureView Status provides a single place to monitor the health of all security sub-systems.



## HOW DOES IT WORK

The dashboard is the heart of SureView Status and tracks two major types of information—configuration information and system/device health.

### Configuration information

With complex deployments, security technology teams need to be able to access key details about their devices without having to jump back and forth between siloed systems. Collating data from different types of software and log files is error-prone and time-consuming. With SureView Status users can access common details about any point in the operation including:

- Network connection information
- System and Device settings
- Device location (map)
- Alarm settings
- Linkage of cameras to alarms

### Health Monitoring

Teams need the confidence to know the status of their systems—health monitoring capabilities of SureView Status include:

#### Health alarms

- Collating the various health alarms from the security subsystems and presenting these as warnings to operations staff

#### Last alarm warnings

- Tracking the last time an alarm was received from a device/system.

#### History of health events

- Full audit trail of of health events for system and devices

#### Key service status

- Monitoring important application services that integrated systems rely on to communicate